



NUMUWAETU NAWAHANA

"Telling the Indian People's News" Pyramid Lake Paiute Tribal Newspaper

Volume X, Issue 1

www.plpt.nsn.us

March, 2011-1st Quarter

THE DUST STORM OF FEBRUARY 7, 2011

Remember the roaring winds and the swirling dust on the afternoon of February 7, 2011? Here is some information collected about the storm that you might find interesting.

I asked Dusty Jackson one day if the tribe has any weather stories or sayings. He said one saying states that if the dust starts rising at the Needles, then the winds will soon be very strong at Sutcliffe. Let's apply that to the storm on the 7th.



In the morning and up until noon along the lake all the way to Wadsworth, the winds were light to moderate. A satellite picture at 12:30 PM begins to show the dust rising at the Needles. You can also see that dust has started to be kicked up in Dry Creek Desert, White Sage Flat, and along the Terraced hills.



At the Needles at this time the rising dust looked much like this:

The tribe monitors air quality and meteorological parameters at Wadsworth. At noon, the equipment was checked and was functioning properly. The particulate concentrations measured 13 ug/m3 at 11AM and the wind was 12 mph from the NNW.

By 4:30 PM there was a whole different story. Sure enough there were white caps on the lake, a sure indicator of high winds on the lake. In addition, the winds brought the dust as well.

(Continued on page 2)

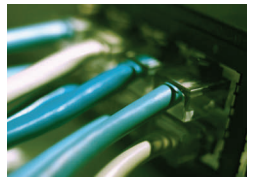
CALLING COMMUNITY MEMBERS TO PRIORITIZE NEW DEVELOPMENT AT PLPT

The Pyramid Lake Paiute Tribe will be applying to the U.S. Housing and Urban Development (HUD) Agency for the Indian Community Development Block Grant (ICDBG) grant to fund a new project on the reservation in 2011. The following projects are being proposed; and we would like your input to prioritize which project (s) we should focus on this year and take your suggestions for other projects. One or more projects could be selected as long as they do not exceed our regional allotment. Please come to this community meeting to learn more about the projects (listed below) and provide your input.

Community Meeting
Saturday, May 28, 2011
10 am to noon
(lunch will be provided)
PLPT Tribal Chamber in Nixon

1. SCADA computer monitoring system for the public water system

This project would install a computer monitoring system on the Tribe's water wells and pumping system so that spills in the system can be detected early. The benefits to tribal members and the Tribe are numerous: it will prevent water outages and wastage and allow for greater efficiency of costs in terms of electricity, water and staffing to visually inspect the water infrastructure sites. The cost to implement this project is \$265,463.



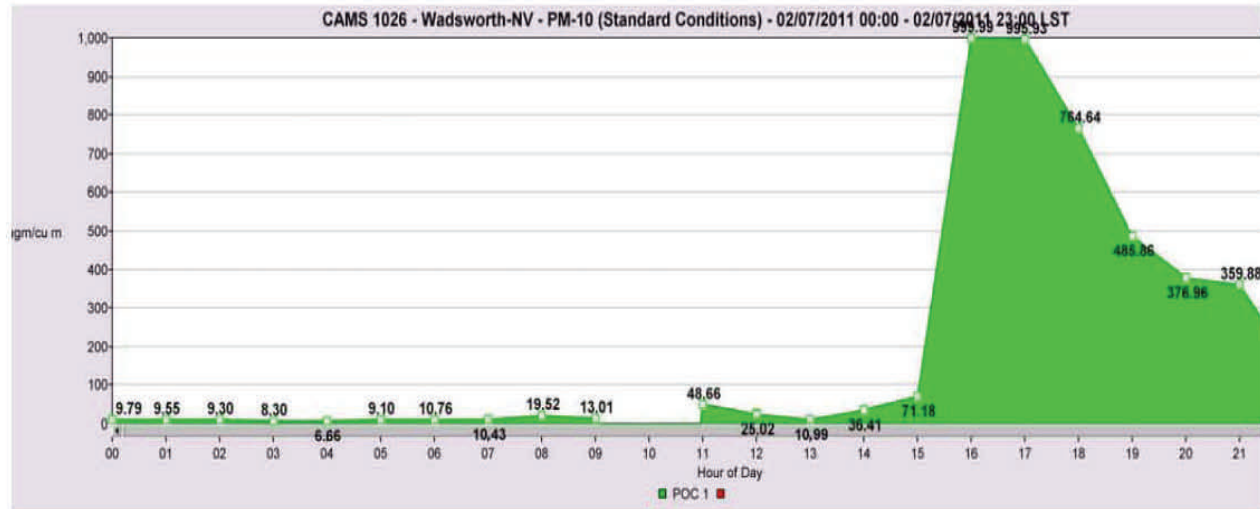
(Continued on page 2)

Inside this issue:

Dust Storm; Community Mtg—May 28th (con't)	2
Enrollment; BTOP	3
Economic Development; Irrigation	4
Higher Education	5
Pyramid Lake Housing	6
Pyramid Lake Health Clinic	7
PLHC_Diabetes; Victim Services Program	8
PLHC Upcoming Events	9
Transportation, TERO, Tribal Orchard, UNR Ag Tax; Little Warriors Learning Center	10
PLHS Leadership Activities: Child Care, Cleanup, Elder Recognition-Flora Green & Simon Harris	12/13
Sacred Visions Pow-Wow; UNR Pow-Wow	14
Pyramid Lake Veterans & Warriors Organization	15

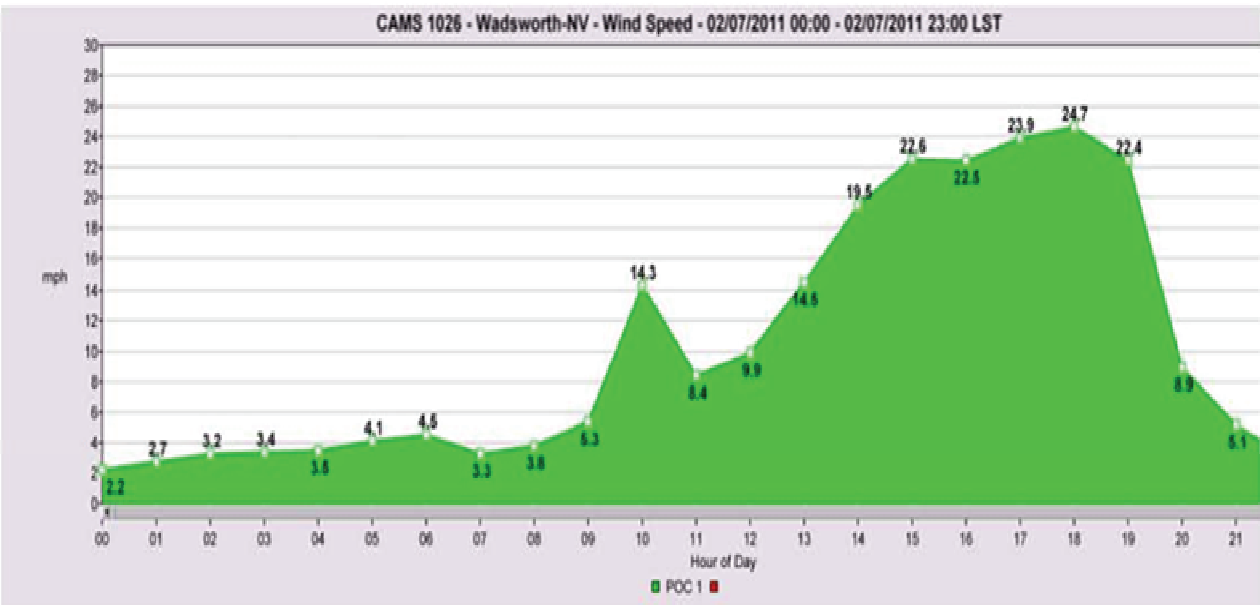
(Continued from page 1)

When the Wadsworth data was graphed, you can see that the concentrations went up to very high levels in the afternoon.



Select CAMS: CAMS 1026 Wadsworth-NV
 Select Parameter: PM-10 (Standard Conditions) -- 81102:1

This happened at the same time that the wind speeds increased as shown in this graph:



Select CAMS: CAMS 1026 Wadsworth-NV
 Select Parameter: Wind Speed -- 81101:1

The dust was thick at Nixon - at unhealthy levels composed of particles that can affect lung function. Besides being unhealthy to people (and especially children and elders), the high particulate levels affect visibility, making it hard to see and enjoy the beauty of the lake and the reservation.



The view from the Nixon post office at 4:30 PM on February 7th shows the sun setting through the thick dust (with an insert of what the view should have looked like).

What can we do about the dust? This episode was short (only 7 hours or so). By getting indoors or turning your vehicle air conditioning to recirculate are a couple options. The dust in our area is exacerbated by the decades of drawdown of Pyramid Lake, exposing playas and shoreline to wind. Any progress we make to increasing water in Pyramid Lake will benefit the air quality, too.

(Continued from page 1)

Wadsworth Community Center



This project would fund Phase II of the Wadsworth Community Center to be located on Hwy 447 just north of 8th Street. Phase I design work is currently underway which would include a community room and large kitchen. Phase II of the Wadsworth Community Center would include a gymnasium, locker room and fitness center as determined from a survey of tribal members last year. The cost to implement this project is approximately \$2 million. This HUD grant would be an important funding source in which to leverage funding from other agencies to complete Phase II.

3. Sutcliffe Fire Station

This project would construct a new four drive-through bay Fire Station/Ranger Station building at the corner of SR 445 and Sutcliffe Drive. This facility would house fire trucks, and Search and Rescue and Ranger Vessels. In addition, it would include office space for fire personnel, a kitchen, and a small Emergency Operation Center (EOC) room which would also double as a conference room /classroom that could be utilized by tribal members. The building would also house the Tribal Rangers Program and provide a location in which the Tribe's customers can purchase lake use permits. It is estimated that this building could be constructed for less than \$1 million.



4. Wadsworth Fire Station

This project would be a single drive-through bay Fire Station and office for fire personnel. This would be Phase III of the Wadsworth Community Center. The estimated cost for this project is approximately \$350,000.



5. Native Elders Assisted Living Center

A working group and survey has been distributed to find out the need for an elders assisted living center on the reservation. This project would fund the next step: a feasibility study to investigate the need on the reservation and other reservations in northern Nevada. Many Native elders are forced to live away from their communities. The cost is yet to be determined.



ENROLLMENT DEPARTMENT

The Office of Tribal Enrollment is open Monday through Friday from 8:00am to 4:30pm closing for lunch between 12:00 pm to 12:30pm.

Enrollment Forms:

The Tribal website is being updated and the following forms will soon be available on line:

- ◆ Card Replacement Request Form
- ◆ Document Request Form
- ◆ Enrolled Member Address Update Form
- ◆ Name Change Request Form

Please be sure to sign and date the form before mailing to the Enrollment Office.

Annual Report:

Work has been completed on the annual report and narrative for 2010. The completed report has been submitted to the Tribal Chairman's office for signature. The annual report and narrative are submitted to the Bureau of Indian Affairs as a requirement of Enrollment's 638 contracts.

Blood Quantum:

All Pyramid Lake Paiute blood is based on the information contained on the Tribe's 1935 Base Roll. In calculating blood quantum, a child is entitled to half of the parent's total tribal blood providing paternity has been established if required. The breakdown of various tribal blood is called a segregated total. The segregated blood can sometimes result in complex blood quantum calculations which are now completed with the help of a software program to help eliminate human errors in these calculations. Some tribes only maintain their tribal blood and do not certify any other blood the person may possess from other tribes. However, it has been the practice of the Enrollment Office to attempt to document all other tribal blood to the benefit of the tribal member. The Pyramid Lake Paiute Tribe is direct lineal decendancy with the only blood quantum requirement being for

adoptive members.

Paternity:

Many applications are processed under the mother's blood quantum only, not including the father's tribal blood. It is always to the child's advantage to include the father's tribal blood when possible. There are five acceptable proofs of paternity when the parents are not legally married:

- ◆ A notarized Affidavit of Paternity signed by the father
- ◆ A decree issued by a court of law that states the father's name
- ◆ The findings of a probate examiner
- ◆ Letter provided by the applicant or sponsor at their own expense, from the State of Nevada Division of Vital Statistics verifying that a completed Affidavit of Paternity is on file at their office (Nevada births only).
- ◆ Official Deoxyribonucleic Acid (DNA) blood test result that is legally acceptable to confirm that the alleged parent is the biological parent of the applicant.

All proof of paternity will be obtained at the expense of the applicant or application sponsor. Paternity must be established if membership is being claimed through the father, and to apply the father's blood quantum towards the child.

Application Processing:

All applications must be submitted with an original birth certificate and social security card which will be returned via certified mail if received by mail. The Enrollment Committee meets on the third Tuesday of every month to review all new applications submitted. All applications approved by the Enrollment Committee will be presented at the first Tribal Council meeting of the following month. Membership approval letters and cards for the new members will be issued the week

following Tribal Council approval.

Address Updates:

All enrolled members are encouraged to keep their mailing addresses current with the Enrollment Office. You may call and request an update form be sent to you or you may submit a written letter to update your mailing address. Sorry we cannot update or change records based on a phone call.

Approvals:

We welcome the following new members of the Tribe:

January 2011: Aiyana Bella Jim, Zaidey Morning Sky Jim, Zavion E Farrow Jim, Frederick Jaxen John.

February 2011: Zachary Kristopher Hicks, Jennifer Marie Hill, Jonathan Madera, Mason Alexander Madera, Tessa Rose Moore.

March 2011: Xochitl Jocelyn Acuna, Jaiden Quincy Barry, Daniel Cody Cepeda, Mekhi Nathaniel Hunter, Jett Stanley Williams.

All of these individuals have met the criteria for Regular Membership and are the direct lineal descendants of Base Enrollees.

Membership Statistics:

As of this writing, we have 2,879 enrolled members of the Tribe, less 364 deceased. The total living membership is 2515 as of this date. This number is subject to change monthly. Names of the deceased are kept on the roll for decendancy purposes.

The Enrollment Office will be closed Tuesday May 3rd thru Thursday May 5th for training we will reopen on Friday May 6th.

If there are any questions or concerns regarding membership issues, please call the Enrollment Office at 775.574.1000, Ext. 115, or email: pl enrollment@plpt.nsn.us.

BROADBAND TECHNOLOGY OPPORTUNITIES PROGRAM (BTOP)

What is BTOP?

BTOP is a Federal Grant Program funded by the Department of Commerce as part of the President's stimulus package. Its purpose is to bring high-speed internet services to rural communities. The tribe applied for and received 7.1 million dollars in funding to develop a fiber network that will connect Wadsworth, Nixon and Sutcliffe with the internet in Reno. Fiber cable uses light for transmission, and is capable of significantly faster speeds than copper cable which is used in older phone lines.

Background for the Grant

The application process was very comprehensive with only a six week window to prepare, and we were required to contribute a 20% in-kind match. In 1999, Williams Communications laid fiber across much of Nevada, and ran fiber cabling down I-80. Because I-80 crosses the Pyramid Lake Reservation, they negotiated with the tribe to provide high school video equipment, a network connection to the high school and grade school, and two strands of fiber from Wadsworth to Reno. This fiber is being used by the Tribe as in-kind match, along with services by the Environmental Dept.,

Fisheries, and dedication of two spots of land for equipment buildings. No cash contribution are being required by the tribe.

What are we connecting?

This project's focus will be on the installation of a fiber network infrastructure. This network will connect twenty-nine tribal and organizational buildings within the three communities. Because of the limited time to prepare the application and the match requirements, home connections were not feasible with these constraints. The network will connect to the fiber to Reno on I-80 behind the I-80 Smokeshop.

The Project

The fiber will be trenched along highways 427, 447, 446, Sutcliffe Drive and parts of the old railroad bed. It is being buried so that the network doesn't suffer from the effects of high winds. During the actual construction phase, there will be some temporary jobs available as project manager, tribal monitor, cable splicers, electronics technicians, flaggers, security, equipment operators and general laborers. These positions will be prominently posted in



the tribal offices and on the website. Most of the grant funding will be needed to cover the costs for the fiber, materials, and electronics equipment. We are currently in the Environmental Assessment phase, designing the route, and resolving the legal acquisitions on the fiber strands to Reno.

Why is a fiber network important to the tribe?

This network enables the tribe to operate all the latest technologies in data, voice and video services at speeds that only major companies and government agencies can afford. It will be the infrastructure to the tribe needs to eventually provide these same services to the homes and businesses within the communities. The tribe will also be in a position to expand economic development opportunities through tribal enterprises and alternative energy programs. Public Safety, Medical Services, Tribal Operations, Education, Library and Community Services will be able to participate in the rapidly changing technology, and this capability will benefit the members of this tribe for many years to come.

MOVING FORWARD: AN UPDATE ON THE ECONOMIC DEVELOPMENT PLAN.

On March 18, 2011 the Tribal Council unanimously approved resolution PL-33-11 adopting the Pyramid Lake Economic Development Plan. On March 23, 2011 a copy of the approved plan was officially submitted to the Federal Government in accordance with Public Law 101-18. The approved plan includes two volumes; Volume #1 the Strategic Economic Development Plan and Volume #2 the Investment and Management Plan.

The purpose of the Strategic Economic Development Plan is to create long term profit-making opportunities, to create optimum employment opportunities, and to establish a high quality recreation area at Pyramid Lake for the Tribe and its Members. The plan is broken down into 7 key elements that are focused on accomplishing the purpose of the plan.

The 7 elements are:

1. Recreation & Fishing;
2. Tribal Enterprises;
3. Good Governance;
4. Education;
5. Industrial & Commercial Development;
6. Agriculture & Ranching; and
7. Tribal Entrepreneurship.

Each element of the plan consists of generalized goals and policies that the Tribal Government can follow to create jobs and growth on the reservation.

The purpose of the Investment and Management Plan is to establish in writing the policy matters concerning the use of the Pyramid Lake Economic Development Fund in order to maximize job creation and revenue for the Tribe and its members. There are 4 sections to this plan; Option A, Option B, Option C and the Investment Policy. Each section of the plan establishes the policy matters for the Tribe to use the Pyramid Lake Economic Development Fund to create jobs and growth on the reservation. In the event that the legal and administrative issues involving PL-101-618 become settled, the option in this plan that best reflects the outcome of the legal and administrative issues surrounding the Truckee River Operating Agreement (TROA) will become the Tribe's plan for the use of the Pyramid Lake Economic Development Fund.

Option A outlines the Tribe's plans to use the Pyramid Lake Paiute Economic Development Fund in the event the Federal Government allows the Tribe to distribute 100% of the interest amount of the form in the form of an economic stimulus payment to each Tribal Member. This option would become the Tribe's plan if the United States Congress amends the law to allow this or if another branch of the Federal Government finds that this amount of individual economic stimulus payments of the interest is allowed.

Option B of this plan outlines the Tribe's plan to use the Economic Development Fund in

the event the Federal Government allows the Tribe to distribute 20% to 50% of the interest amount in the form of an economic stimulus payment to each Tribal Member. This option would become the Tribe's plan if the United States Congress amends the law to allow this or if another branch of the Federal Government finds that this amount of individual economic stimulus payments of the interest is allowed.

Option C of this plan outlines the Tribe's plan to use the Economic Development Fund in the event the Federal Government does not allow the Tribe to distribute none of the interest amount in the form of an economic stimulus payment to each Tribal Member. This option would become the Tribe's plan if the United States Congress does not amend the law to allow this or if another branch of the Federal Government finds that individual economic stimulus payments of the interest is not allowed. The Investment Policy section of this plan outlines the guidelines and objective for the Federal Government to follow while managing the Pyramid Lake Economic Development Fund.

It is important to note that the approval of an Economic Development Plan by the Tribe does not mean that the Federal Government will allow the Tribe to access the Pyramid Lake Paiute Economic Development Fund. It is also important to note that the approval of the plan by the Tribal Council does not mean that payments to Tribal Members will start immediately. There are many lingering legal and administrative issues involving PL-101-618 and the uses of the Pyramid Lake Economic Development Fund that still must be worked out. These issues include; the legality of the Tribe to be able to distribute certain funds from the Pyramid Lake Economic Development Fund for use by Tribal Members, and the implementation of the Truckee River Operating Agreement and Federal administrative reviews and legal issues concerning PL-101-618.

A copy of the both volumes of the approved Economic Development Plan can be accessed for free at <http://www.plpt.nsn.us/econdev/index.html>.

We have instituted an open door policy throughout the planning process of the Economic Development Plan and would appreciate any input from Tribal Members. If any Tribal Members have any questions or would like additional information about the Economic Development Plan please feel free to contact me or stop by my office which is located next door to the Enrollment Office in the Tribal Administration Building in Nixon.

Thank You,
Scott H. Carey, Tribal Planner
775-574-1000 ext 116
scarey@plpt.nsn.us



**JUST A REMINDER TO
ALL PARENTS:**

**IT'S IRRIGATION
SEASON!**

**PLEASE KEEP
CHILDREN OUT OF
AND AWAY FROM
THE DITCHES IN
WADSWORTH
AND NIXON.**

We know it's hot and it can be fun to play in the ditches, BUT it also can be very DANGEROUS.

Also, it is IMPORTANT to tell the children not to throw anything in the ditches, such a tree branches, boxes, chairs, old tires, bikes, toys, etc. Any of these items can become caught up in or around the head gates, pipes, under the bridges or roads and could cause a backup and some serious damage to the roads, farmers fields, ditches, or a neighbor's homes.

Your help in making it safe during Irrigation season is always appreciated.

Please report any concerns to the
Water Resources Dept.
775-574-1050 ext 22
or call
Jeff at 775-846-3184



PYRAMID LAKE PAIUTE TRIBE—CONSOLIDATED HIGHER EDUCATION PROGRAM
*2011/2011 Higher Education Scholarship Applications for Higher Education, Tax Enrichment Scholarship
and Adult Vocational Training are due **JUNE 30, 2011***

All Tribal Scholarship Applications are on the Pyramid Lake Paiute Tribes Website!

This past year we had too many late applications that I had to explain to our Consolidated Higher Education Committee as to why this application was late and that application was late.



They were hesitant in approving late scholarships because our deadline date is **JUNE 30**, students please be advised, you owe it to yourself to work to get in all your paperwork processed in a timely matter...

This includes your FAFSA information, which you should have already submitted, if you haven't submitted it for the 2011/2012 school year, please hurry!!!!

Consolidated Higher Education Scholarship Application Process;

This past year we had a big increase in our tribal membership applying for higher education funding. During the review process of all tribal scholarship applications, **ALL APPLICATIONS** must be turned in completed. **Many are being turned into our office incomplete.**

When an application is turned in not completed, it is set aside from the completed applications and notification is sent out in an attempt to notify you that your application is not complete. As a student requesting higher education funding, you must remember we have deadline dates that have to be strictly followed so funding can reach all institutions in a timely manner.

It is your responsibility as a higher education student to follow up in making sure all necessary documentation reaches the Consolidated Higher Education Office before the deadline date. "It is not the Higher Education Coordinator responsibility in making sure you follow up on required documentation."

Applications sent in on deadline dates without the required scholarship documentation delays your application to be processed and most are not processed due to the lack of required documentation.

Our Tribal Website has all the information and the necessary forms for you to complete a tribal scholarship application. **Again, it is your responsibility in turning in all necessary documentation need in order for you application to be complete by the DEAD LINE DATE...**

(REPEAT) Uncompleted Consolidated Higher Education Application sent in on dead line dates will not be included without all required documentation. So if you are trying to submit an application on the deadline date and it is not complete, IT WILL NOT BE PROCESSED.

"TRANSCRIPTS ARE NOT CLASS SCHEDULES; many of had not submitted their required class schedules as requested by the CHE Coordinator/Higher Education Director..."

Semester Transcripts;

This is a reminder to all students attending College, Community College, University, or any Higher Education Training Institution. It is a requirement in the Pyramid lake Paiute Tribes, Consolidated Higher Education Policies;

Section VI – Academic Probation & Suspension

(A) All students will be required to submit an **Official Transcript upon each term/semester tri semester/quarter semester** to the Consolidated Higher Education Program Office.

*This is mandatory that **all** students must submit an Official Transcript. If you have not submitted an Official Transcript please do so immediately... Also please be advised, **UNOFFICIAL TRANSCRIPTS will not be accepted.***

Address:

**Pyramid Lake Paiute Tribe
Consolidated Higher Education Program
PO Box 257
Nixon, NV. 89424**

FAFSA ; Free Application for Federal Student Aid

Returning students and new students, now is the time to begin updating your FAFSA. It is a requirement in our Consolidated Higher Education Policies that you must file for other forms of financial aid:

PLPT Consolidated Higher Education Policies, Section II – Eligibility

(A)2. An eligible student who demonstrates a need as determined by the college or university, Financial Aid Office based on each student's **certified financial aid requirements for (FAFSA Free Application for Federal Student Aid) Federal Assistance, Pell Grant.**

You are required to file for FAFSA per our Consolidated Higher Education Program. If, after filing you do not have a need, then there are other policies that can help you in acquiring funding through our program. **BUT YOU MUST FILE FOR FAFSA IN A TIMELY MANNER...**

Section IV – Standards of grant applications and funding;

(A) **Contingent upon the amount of funds made available by the Bureau of Indian Education, and the Pyramid Lake Paiute Tribe, eligible students will be funded according to the following guidelines.**

1). Applicants will be funded based on each student's certified financial aid requirements for Federal

Financial Assistance, such as the PELL Grant, unless the applicant falls under **Section II, (A) 3, and until funds are exhausted and who have submitted a COMPLETE APPLICATION PACKET by the REQUIRED DEADLINE DATE.**

1)c. A Financial Needs Assessment completed by the college or university financial aid officer determining /recommending a proposed amount for funding from the tribe.

Parents/Students, please beware of our Consolidated Higher Education Program policy on Academic Requirements.

Section V – Academic Requirements;

(A) The following requirements for the academic process will be used to determine the continuation of funding from the Consolidated Higher Education Program.

1). **All undergraduate students must maintain a GPA of 2.0 or Higher.**

Students, who do not meet the minimum of the GPA requirement for one term, will be funded on academic probation.

Notification of this action will be made to students by letter. If student's progress is not up to the Consolidated Higher Education Program academic requirements after the probationary term, **the students Tribal funding will be suspended.**

(B) All full time students must maintain the minimum of 12 college credits per semester.

(C) If less than 12 credits are earned, the student will be placed on academic probation. In addition

a. Student will be required to pay back tuition for the number of credits dropped; this will be deducted from the following semester's scholarship award.

b. Students can make up the required credits the following semester in addition to the minimum 12 credit requirement.

If you receive a letter from the Consolidated Higher Education Program, you must contact this office at once. **(775) 574-0300 Monday – Friday 8:00 AM through 4:30 PM.**

The **PYRAMID LAKE PAIUTE TRIBE**, Consolidated Higher Education Program is open Monday through Friday, 8AM through 4:30 PM. If you have any questions, **PLEASE CALL** and I'll get back to you.

Anthony Sampson
PLPT Consolidated Higher Education Program Coordinator/Director
asampson@plpt.nsn.us

PYRAMID LAKE HOUSING AUTHORITY 2010 ANNUAL PERFORMANCE REPORT

Under NAHASDA, HUD will provide grants, loan guarantees, and technical assistance to Indian Tribes for the development and operation of low-income housing in Indian areas. Recipients of Indian Housing Block Grant (IHBG) program funds are required to submit an Annual Performance Report (APR) to HUD within 90 days at the end of their program year. PLHA is a recipient of IHBG program funds. The 2010 APR has been completed and has been posted on 03.25.11 for public comment. You may contact the PLHA @ 574.1026 or write to PO Box 210 Nixon, NV 89424 if you have any questions regarding this report.

MISSION STATEMENT – The Pyramid Lake Paiute Tribe is committed to providing the opportunity for safe, decent, sanitary, and affordable housing for tribal members and to do so in a way that is consistent with the Tribe’s social, cultural and economic values.

PLHA was established by Ordinance No. X. adopted by the Tribal Council February 1963. Article IV of the Ordinance established a Board of Commissioners composed of five persons. Each commissioner serves a four year term. Every year, a commissioner’s term is up and every year the Tribal Council appoints or re-appoints a commissioner. Monthly Board meetings are held. The Tribal Council adopted resolution No.PL 72-97 which designated the PLHA as the Tribally Designated Housing Entity (TDHE). PLHA has been in operation for 48 years.

The current PLHA Board of Commissioners are Dean Calvin, Chairperson; Robert James, Vice-Chairperson; Judith Davis, Secretary/Treasurer; Irwin Mix, Commissioner; and Edward Ely III, Commissioner. The PLHA staff consists of ten full time employees. Christine John, Executive Director; Jill Mix, Finance Manager; Mary Ann Frazier, Administrative Assistant; Jackie Mix, Development Coordinator; Deborah Smith, Development Assistant; Diana Mitchell, Housing Services Specialist; Skyy Jackson, Housing Services Specialist; Tom Monroe, Maintenance Supervisor; Steve Mandell, Maintenance Tech; and Ross Harden, Jr., Maintenance Tech.

FY10 Project Summary – Maintenance Department

PLHA Number	Contract Name	Funding Source	Budget Amount	Contract Amount	Change Orders	Contract Amount	Completion Date
M-09-02	Wadsworth & Nixon Window Mount Air Coolers	NAHASDA	\$18,000.00	\$10,107.90		\$10,107.90	Install 2010
M-09-03	NV 4-6 W9 & PLHA Admin. Bldg.	NAHASDA & NPF	\$70,000.00	\$45,960.13			
A	Interior Paint	"	\$12,396.85	\$19,510	None	\$19,510	Dec 2010
B	Floor Covering	"	\$33,563.28	\$24,841	none	\$24,841	Dec 2010
M-09-04	Rock Bldg Clean Up – Material & FA (No contractor)	NPF	\$20,000.00	\$8814		\$8,814	Nov 2010
M-09-05	Admin. Kitchen Renovation	NPF	\$10,000.00				In Progress
M 10-01	Project Chain Link	B&A		\$5,423	none	5,423	10.29.10
M10-02	Project Office Roof	B&A		\$4,598	none	\$4,598	11.18.10

There are 213 units under management as of 12.31.10. 108 are homeownership units, 55 are lease-purchase units and 48 are rental (12 single dwelling and 36 apartments) units. The conveyance process has begun under the NV4-9 project for 1 homeowner. The occupancy rate for the homeownership program and the 12 single dwelling rental units is 100%. The rental apartment occupancy rate increased to 100% in 2010.

The annual financial audit for FY09 was conducted by Barlow, Camara & Rowland, CPA APC. The Board formerly accepted the FY09 audit report July 22, 2010. The one finding reported in the FY08 audit was closed during the FY09 audit. The FY10 audit field work is scheduled to be conducted March 7 – 11, 2010 by Barlow, Camara & Rowland, CPAs.

The Elder/Handicap Housing Assistance Program (EHAP) has been established as well as the Elder’s Home Protection Program. The Housing Admin works with the elders to coordinate the various programs available to get the needed repairs completed. There are 22 elder homes presently covered in the home protection program.

In order to enforce the LR leases and MH and HB agreements, the tenant accounts receivable (TARS) are reviewed bi-monthly. TARS are unpaid rent. Notice of Delinquency, Hearings, and Final letters are mailed in accordance with PLHA’s Collection and Eviction Policy. Payback agreements are entered into in an effort to have the tenants remain in compliance with their agreements. Civil complaints are filed in tribal court for those accounts which will not pay.

The annual inspection of the units are

FY10 Project Summary – Development Department

PLHA Number	Contract Name	Funding Source	Budget Amount	Contract Amount	Completion Date
D 09-06	NV4-16 New Construction	NAHASDA	\$2,501,250	\$2,501,250	Occupied 12’10
D 09-09	Cat. B Renovation- 2 units	BIA HIP	\$70,000	\$70,000	In Progress
D 09-10	A&E Service NV4-16	NAHASDA	\$100,000	\$43,250	In Progress
<i>FY09 Pending Projects</i>					
1) NV4-14 Cul-Mar Panel Project 2) BIA HIP New Construction 1 unit					

required under the agreements and leases as well as being stipulated in the statute. The annual inspection gives management the opportunity to inspect the units to see the conditions of the unit. For the rentals, work orders are issued to repair or replace needed items. The rental units were inspected the month of February 2010. Under the homebuyer program, the repairs and replacement are the responsibility of the homebuyer. Those homebuyers who have acquired equity may use those funds for repairs and replacement in the home. The mutual help units were inspected during April & May 2010.

New Construction. Before any construction starts, the Board determines there is a need for housing. The resident services department finalizes the homebuyers’ waiting list. The criteria to be eligible for a new home is you must be an enrolled Pyramid Lake Paiute tribal member, income eligible, family of 2 or more, no tribal debts, and willing to accept the responsibility of a home. The Board approved the 2010 homebuyers’ waiting list May 2010 which consists of 73 applicants. The new construction known as ‘NV4-16’ ; had ten units planned to be built in the Wadsworth extended sub-division. Fortunately, 5 additional units were constructed using ARRA funds. The Board hired Dube’ Architecture Group June’09. Site work for the new homes began April 2010. The 15 new homebuyers occupied the houses in December 2010.

PLHA administers, on behalf of the tribe, Indian Health Service projects and the Bureau of Indian Affairs Housing Improvement Program (BIA-HIP) projects. The FY10 Project Summary Listing details the various projects which were completed in 2010. Also listed are the projects which will be carried over and completed in FY11.

Do you own a motorcycle?
Pyramid Lake motorcycle license plates are now available for purchase through the Nevada Department of Motor Vehicles.



If you have questions call DMV at 775-684-4368 or visit them at www.dmvnv.com.
RIDE WITH PRIDE!



PYRAMID LAKE TRIBAL HEALTH CLINIC

PO Box 227 | 705 HWY 446 | Nixon, NV 89424
Hours 8:00—4:30 p.m.

Clinic (775) 574-1018
Admin Fax (775) 574-1114

Medical Records Fax (775) 574-1028
Contract Health Service Fax (775) 574-1074

Pyramid Lake Paiute Tribe covered under St. Mary's First Health will need to utilize St. Mary's Regional Medical Center and Those Tribal Entities that are still covered under Anthem BC/BS need to utilize Renown Regional Medical Center

Reno/Sparks Tribal Health Clinic

1715 Keunzli St., Reno, NV 89510
(775) 329-5162

Medical, Pediatrician, Physical Therapy, Mental Health, Optometry and Ophthalmologist, General Surgeon (PIMC)

Fallon Tribal Health Clinic

1001 Rio Vista Drive, Fallon, NV 89406
(775) 423-3634

Medical, Chiropractic Services, Women's Health (Colposcopy)

Walker River Tribal Health Clinic

1025 Hospital Road, Schurz, NV 89427
(775) 773-2005

Medical, Chiropractic Services, and X-Ray Services



Schurz Service Unit

1025 Hospital Road, Schurz, NV 89427

Cynthia Kness, CHS Contact for Nixon

(775) 773-2345 Admin (Local)
(800) 843-5790 Admin (Toll-Free No.)
(775) 773-2425 Admin-Fax
(800) 772-7228 Contract Care

Preferred Hospital to be utilized by I.H.S. Patients:

Saint Mary's Regional Medical Center

235 W. Sixth Street, Reno, NV 89503

(775) 770-3031 Medical Records
(775) 770-3679 Medical Records-Fax
(775) 770-3187 Imaging Scheduling
(775) 770-3371 Imaging Scheduling-Fax
(775) 770-6660 Center for Health-Fax
(775) 770-3396 Film Room

Saint Mary's Regional Medical Center Imaging Services

235 W. Sixth Street, Reno, NV 89503
Open 24 hours a day, 7 days a week

Saint Mary's Out-Patient Imaging Center

645 N. Arlington, Ste 250, Reno, NV 89503
Open Monday-Friday, 8:00 am to 5:00 pm

Saint Mary's Imaging at Galena

18653 Wedge Parkway, Reno, NV 89511
Open Monday-Friday, 8:00 am to 5:00 pm

To schedule an appointment at any of these locations, please call (775) 770-3187.

Renown Regional Medical Center

1155 Mill Street, Reno, NV 89502

(775) 982-4100 Admin
(775) 982-5661 Medical Records
(775) 982-5669 Medical Records-Fax

South Meadows Medical Center

10101 Double R Blvd., Reno, NV 89521

(775) 982-7000
(775) 982-7084 Medical Records

Renown Health X-Ray & Imaging

10 Convenient Locations

(775) 982-8100
(775) 982-4966 Film Room

Renown Health Urgent Care

5 Convenient Locations
(775) 982-5000

Northern Nevada Medical Center

2375 E. Prater Way, Sparks, NV 89434

(775) 331-7000 Admin

Vista Medical Terrace

2345 E. Prater Way, Sparks, NV 89434

- ◆ Physician Offices
- ◆ Northern NV Imaging
- ◆ X-Ray
- ◆ Diagnostic Breast Care- Mammography and DEXA Services
- ◆ Wound Care Center

VA Sierra Nevada Health Care System

1000 Locust Street, Reno, NV 89502

(775) 786-7200

VA Lahontan Valley Out-Patient Clinic

345 West A Street, Fallon, NV 89406

(775) 426-6161 Office
(775) 426-6171 Fax

EMERGENCY VISITS or HOSPITALIZATIONS

Make sure you present your identification and insurance information and/or referral form (if you were referred by the clinic) to the Emergency Room Admissions Clerks.

Notify PLTHC, I.H.S.-Schurz Service Unit or any Tribal Health facility within 72 hours of receiving Emergency Care or Hospitalization to a non-I.H.S. Facility.

For Elders or Disabled you have 30 days.

REMEMBER....

Notification does not assure authorization of payment. However, if you do not notify Contract Health Care within 72 hours your bill will not be paid.

Doctors and other health care professionals (nurse, clerks, etc.) cannot authorize payment of services received outside of an I.H.S. or tribal facility. Only the Contract Health Services (CHS) Electronic Signature Official can authorize payment.

IMPORTANT NOTE

CHS Services can be denied if you have not applied for an alternate resource or followed through.

ALTERNATE RESOURCES

Wilma Madge Smith-Tobey, Benefits Coordinator can assist you with applying for alternate resources that you may be eligible for, such as NV Medicaid, Social Security, Disability and Veteran Services through the Veterans Administration. Please call (775) 574-1018.

ATTENTION

College or Vocational Training Students

Any College Student or persons attending Training out of state or elsewhere that does not fall within our Contract Health Service Delivery Area (CHSDA) will need to contact the Pyramid Lake Tribal Health Clinic and request a Student Application form that will need to be completed by the Registrar's Office or Official at your particular School or Training facility. The original will be placed in the patient chart and a copy will be forwarded to the Contract Health Service Office at the Schurz Service Unit. If Emergency Care or Hospitalization is needed you will report the visit the same as if you were still in our area.

Notification needs to be made to Pyramid Lake Tribal Health Clinic (775)574-1018, Indian Health Service-Schurz Service Unit (775)773-2345 or any Tribal Facility in Nevada within 72 hours of the visit and 30 days for elders.

Remember: Notification does not assure authorization of payment. However, if you do not notify Contract Health Service within the 72 hour period your bill will not be paid.

Patient Responsibility for Contract Health Services

- ◆ Update your information upon every visit (name changes, telephone numbers, addresses, employment and insurance information.)
- ◆ Apply for alternate resources that you may be eligible for (Private insurance, Medicare, NV Medicaid, etc.)
- ◆ Make regular appointments and keep your physicians or nurses apprised of any further care needed by an outside physician or specialist so that a referral will be written.
- ◆ Notify the Contract Health Service and obtain approval for CHS for each and every appointment.

Reporting Emergency Visits or Hospitalizations to Contract Health Services

- ◆ It is your responsibility to obtain PRIOR APPROVAL for non-emergency treatment by a non-I.H.S. Facility (Cardiologist, ENT, Ortho, etc.).
- ◆ **Notify PLTHC, I.H.S. or any Tribal Health facility within 72 hours of receiving Emergency Care or Hospitalization to a non-I.H.S. Facility.**
- ◆ **For Elders or Disabled you have 30 days.**

CONTRACT HEALTH SERVICE PROCESS

1. Provider writes the referral to the Specialist, Hospital or Imaging, etc.
2. Referral is processed in CHS office by entering the correct demographics on the form such as address, phone and insurance information. It's very important that your information and insurance is up to date.
3. CHS Clerk will verify insurance and if needed Pre-authorize the visit.
4. Information is entered into the CHS system and is sent to Phoenix for APPROVAL OR DENIAL. This may take 1-2 days.
5. If APPROVED an appointment will be scheduled. If denied, we will contact you and ask if you are willing to pay co-pays or office fee. If yes, we will schedule or we will mail the referral to you and you may schedule.

****Please give us 2-5 days to process your referral****

“PEHABEMAKOO TU’OYAENA NOBE”

MANAGING YOUR TYPE 2 DIABETES

It is important to keep your blood sugar controlled, because when too much sugar stays in your blood for a long time, it can damage your vessels and nerves.

Much of the food we eat is turned into sugar in the blood for our bodies to use as energy. A hormone produced in the pancreas called insulin helps sugar get into the cells in our body. If your body doesn't make enough insulin or if the insulin doesn't work the way it should, blood sugar can't get into your cells and instead stays in your blood raising your blood sugar level.

Three ways to help manage your Type 2 diabetes are:

- ◆ Using your medications exactly as your doctor prescribes
- ◆ Making smart food choices
- ◆ Being physically active

If you have any questions or concerns about managing your Type 2 diabetes, please contact Patti Sicherman our Certified Diabetic Educator, or the Diabetes Wellness Program office.

DIABETES SELF-CARE OVERVIEW

Learn the "survival skills" of living with pre-diabetes or diabetes Topics:

- Basic disease process
- How do I know if I'm doing okay or not?
- What should I eat? How much activity is needed?
- What is a healthy weight? Do I need to Lose?
- Information about medications and blood glucose monitoring
- Reducing risks and complications

When? Thursday, April 7, 2011 5:30-7:00 PM
Where? Pyramid Lake Tribal Health Clinic Lobby

- ~ Chance for a Wal-Mart gift certificate giveaway
- ~ Chance to enter in the most improved Hb A1C contest,
- ~ Chance to win a \$100.00 gift card

Presenter: Patti Sicherman, RN CDE
Phone: 775-574-1018 x241 or x243 for more information

THERE ARE CHANGES COMING TO THE EXERCISE ROOM!!

Beginning January 10, 2011 the Diabetes Wellness Program began to issue keycards for the Exercise Room. Please come in to the Diabetes Wellness Program Office and we will issue you a keycard. With this keycard you will be able to enter the Exercise Room at your leisure. You will be required to provide your own towels.

Unfortunately due to 2010 - 2011 Budget constraints Bill Myatt, Exercise Specialist, will no longer be available.

TAI CHI CLASS SCHEDULE:

- Tuesday at the Sutcliffe Community Center 6:30 pm-7:30pm
- Wednesday-Wadsworth Community Center 6:30 pm-7:30
*No special clothes or shoes are needed.
Just dress to be comfortable.....*

Tai Chi is a Chinese martial art that combines diaphragmatic breathing and relaxation with soft, gentle movements. It is considered moderate exercise, which has previously been shown to improve immune system response, in contrast to strenuous physical activity, which depresses it. Previous studies have shown that it improves vascular, respiratory and cardiovascular function, while improving flexibility and relieving [stress](#). Tai Chi is regarded as the second best exercise for diabetes patients (the first being swimming) because it stimulates blood circulation



Rocking motion

Stand with feet parallel, arms at your sides. Raise your arms slowly, palms up, while simultaneously rising on the balls of your feet. Then lower your arms, palms down, while letting your heels touchdown and raising your toes slightly. Repeat 9, 18, or 36 times. *Bird flaps its wings*



Stand with heels together and toes splayed, palms facing each other below waist, fingertips down. Flap your arms while bending knees and raising heels. Return to original position and repeat the exercise. The third time, after flapping arms, move wrists in circular motion 1 1/2 times before returning to the starting position.

Daughter on the mountaintop

Step forward with left foot, hands at sides, palms up. As your weight shifts forward to your bent left leg, swing hands slowly in circular motion in front of you, crossing your wrists. With your weight fully forward, straighten right leg and raise right heel. Then shift back and repeat with other leg. Do 9, 18, or 36 times.



VICTIM SUPPORT SERVICES PROGRAM



WELCOME to the new and improved **VICTIM SUPPORT SERVICES PROGRAM**. There have been significant changes to the program in the last three months. We are a community outreach and support program designed to assist members who have been victimized by domestic violence and stalking.

We provide a wide range of services to assist with temporary emergency housing, food, clothing, gasoline, legal assistance, counseling, life skills

planning, financial planning, assistance with the preparation of resumes and job applications and other related resources.

In addition, we are in the process of expanding our range of assistance to include similar services to the Tribe's veterans who have so honorably served our Tribe and country. More will follow as the program is developed.

On April 13, 2011 from 11 am to 1 pm we are hosting a spaghetti lunch for the community to come by, meet the staff and learn more about what we offer. If you are going to join us for lunch please call no later than 11 am

on Monday, April 11th so that we can reserve a plate for you.

Our staff includes Kim Lowery, Shelter Advocate; Shasta Wadsworth, Transitional Housing Advocate; John Meche', Legal Advocate; Doug Nicholson, Counselor; and Galynn Lindemann, Interim Director.

Feel free to stop by and meet the staff. We are here for your benefit and look forward to serving the community. Phone: 775-575-9444. Located at: 101 Ranch Road Wadsworth, NV 89442.

PRE DIABETES/DIABETES SURVIVAL SKILLS

Monthly Support and Guidance

Learn

- How to live a healthy life with diabetes
- What blood sugar numbers to aim for
 - How to measure improvement and avoid trouble
 - How diabetes medicines work

Classes start April 7th 2011 then first Thursday of each month

TIME: 5:30 P.M. - 6:30 P.M.

Location: Pyramid Lake Health Clinic Lobby

Any questions call 775 574-1018 ext. 241

FACILITATORS: PATTI SICHERMAN, RN CDE AND

MAXINE BURNS, DIABETES PROGRAM ASSISTANT

DOOR PRIZES

Starting Point for Healthy Nutrition

Are you carrying extra weight?

Would you like to learn how to shed pounds?

Interested in making healthy lifestyle choices?

Want to learn more about diabetes and losing weight?

Pyramid Lake Health Clinic Lobby

Join Us April 14, 2011

More Information: Call
Patti Sicherman or Maxine Burns

775 574-1018 ext. 241



Starting

April 4, 2011 the

Clinic will be
staying open late
Mondays

Open till 7:00 p.m.

Clinic will still have the normal hours of 8:00 a.m. to 4:30 p.m.

Tuesday Thursday Friday

Wed 8:00 a.m. to 12:00 p.m.

Mon 8:00 a.m. to 7:00 p.m.

Please call for a appointment



IDA 'N WILLIE'S ROADHOUSE

For those of you who enjoy home-cooked food and friendly prompt service a new diner is opened in Wadsworth at 100 Main St.

Ida 'n Willie's specializes in home-cooked lunches and dinners and is notable for having that home-town atmosphere. For years, co-owner Shawn Sam's dad "RK" has prepared his famous tri-tip recipe for family and friends and now it is available for everyone to enjoy. Ida 'n Willie's is committed to serving fulfilling meals at an affordable price.

Customers can enjoy casual family dining while ordering from a menu that offers home-style comfort food like homemade soup. Daily specials are available or customers can also order their favorites like the mouthwatering chili cheese fries, made from fresh-cut fries topped with homemade chili and cheddar cheese or an Indian Taco. Shawn's brother, who passed away in 2010, always had a vision of opening up a bar & grill where friends and family could gather and enjoy each other's company, Ida 'n Willie's is a continuation of his dream. Ida 'n Willie's name originates from Shawn's late grandparents who were members of the Pyramid Lake Paiute Tribe.

With seating up to 40 guests and free Wi-Fi available Ida 'n Willie's is a great place to host your next meeting. Contact for more information.

The average lunch cost is \$6.00. The grill is open Monday-Friday-11:30 am to 8:00 pm daily; Saturday 9:00 am-8:00 pm; and Sunday 9:00 am-3:00 pm. We are now open for Brunch on Saturday and Sunday from 9:00 am-2:00 pm. Bar hours are based upon customer demand. (Hours subject to change).

Desserts vary day to day since they are made fresh from scratch. Join us today. We are located in Wadsworth next to the Truckee River in the red building.

Wadsworth Inn dba



Home Cooking



COUPON

Please present this coupon to the staff at
Ida 'n Willie's Roadhouse and receive
\$1.00 of your meal of \$6 or more.

Offer expires 04/30/11. No Cash Value. Limit one per customer.

Terry Friedman, Co-Owner | Shawn Sam, Co-Owner
100 Main Street, Wadsworth, NV 89442
Phone: 775-980-6088 | Email: ida-n-willies@att.net

TRANSPORTATION PLANNING

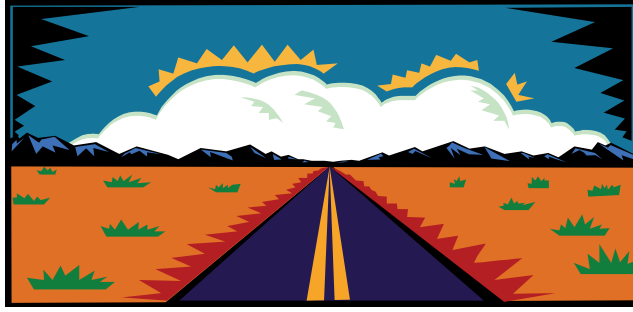
The Tribal Transportation Planning office was established to provide technical management on road construction from design phase through final acceptance. The Department acts as liaison between the Tribe and other Transportation related agencies to coordinate roads planning and construction activities. The office personnel consist of a Transportation Planner and Secretary. The Transportation Planning Office has been in existence from May 2009 and is located at the Tribal Administration Building and funded through a BIA 638 grant.

The Transportation Planning office currently is working on five projects including: Roads Inventory Update with Long Range Transportation Plan, Wadsworth Bypass Road, ARRA Roads Repair & Rehabilitation (R&R) Project, ARRA Safety Project and ARRA Construction Project.

UPDATE ON THE PROJECTS:

The Roads Inventory Update is a project to compile, update and classify the location of existing roads and future roads on the Reservation. The Long Range Transportation Plan is a project to identify Reservation Transportation Projects including; Tribal public bus system (Transit), Bike Paths, Scenic Byways, Safe Paths to School, etc. The Transportation Planning Department is working with our consultant, Lumos & Associates to complete this project. Lumos has submitted draft maps that show the additional roads to be added to the inventory. The Inventory Update of all proposed roads has been approved by the Tribal Council and has been sent to BIA for their approval. The draft Long Range Transportation Plans has also been submitted by Lumos and will be posted for public review for 30 days.

The Wadsworth Bypass Road is Tribal Priority #1 for roads construction and work is proceeding to have the project surveyed, designed, environmental clearance, archaeological clearance, right-of way and final plans (A & E Services) completed. Summit Engineering was the consultant



selected to complete the (A & E Services) for the Wadsworth Bypass Project. The Tribe has signed the contract with summit for these services and notice to proceed for this work was issued October 25, 2010. The Transportation Planning Department continues to work with Summit Engineering to assure that the project is completed within Tribal and Federal Government specifications. The Tribe's yearly share of constructions funds has been supplemented and the construction of the project could begin within 2 years. The Tribe also is cooperating with NDOT to complete this project to required standards and be included as a State Route.

The (ARRA) Construction Project will consist of the survey, design, environmental clearance archaeological clearance, right-of way and final plans (A & E) for the upgrade of the Pelican Point Road area, the #2 Tribal Priority Roads Construction Project. The Tribe approved Summit Engineering as the contractor for this (A & E) project. This ARRA design project has started as of December 16, 2010 and will be completed by September 30, 2011. As with the Wadsworth Bypass Project, the Transportation Planning Department will monitor the work to assure compliance to Tribal and Federal Government Specifications. Yearly Tribal allocation construction funds will need to be earmarked to complete construction of this #2 priority project.

The ARRA Roads Repair & Restoration (R&R) project was scheduled from June 2010 to September 2010 with an extension to September 30, 2011 and was concentrated

effort to repair paved reservation roads identified in the BIA contract. This project was directly contracted by the Pyramid Lake Paiute Tribe through the Transportation Planning Office. The crack seal and patching portion of this project ran during the summer of 2010. This project employed up to 16 Native American workers at project peak work days in August. The workers saw cut pothole/failing areas of the road with an asphalt saw and patched/rolled with hot mix asphalt hauled from Reno. The crew also used a Craftco 125 hot asphalt melter to crack seal route 102 Wadsworth. Work on this project is currently on winter shutdown with the chip sealing to be sub-contracted to an independent contractor and is scheduled to be completed in the summer of 2011.

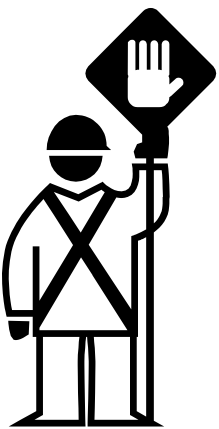
The (ARRA) Safety Project was scheduled from July 2010 to September 2010 with an extension to September 30, 2011 consisted of replacing Highway and Street signs on the Reservation and striping centerline. The contractor for this project is the Pyramid Lake Paiute Tribe also through the Transportation Planning Office. This project also employed up to 16 Native American workers during the peak work days in August 2010. The workers replaced old signs with new retro-reflective, anti-graffiti signs with breakaway unistrut posts. The signing work was also completed on September 30, 2010. Centerline striping will be of selected roads because of budget constraints and will be sub-contracted to a qualified contractor after the chip seal project is complete.

The Transportation Planning Staff will continue to work to improve the Transportation system of the Pyramid Lake Paiute Tribe.

Johnnie M. Garcia
Transportation Planner

Jolene Henry
Transportation Planning Secretary

TRIBAL ADMINISTRATION—TERO, PAIUTE LANGUAGE, TRIBAL ORCHARD, UNR AG PROGRAM



The Tribe is in the process of updating the Tribal Labor Force listing for the Tribal Employment Rights Ordinance.

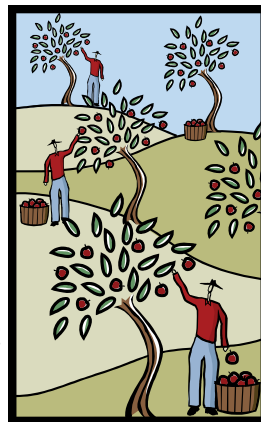
When contractors come on the reservation to do work, this listing is provided to them so the contractors can create opportunity for interview and possible hiring of qualified Native Americans.

Upcoming projects include two HIP homes being built and NDOT road construction work on I-80.

Paiute language classes are being held in the Wadsworth brown building every Thursday evening from 6 to 8 pm. The teachers are volunteering and making the learning fun. Participants are coming because they want to learn Paiute. Participants also bring pot luck food/snacks/drinks to share with everyone. If

you are interested, please come to language class. The class is also planning to hold a Paiute Speakers gathering here in April in Wadsworth.

The Tribal orchard in Nixon survived the winter. Work is being planned to complete the tree guards, lay the bark and complete the water system. Plans are to build a shaded area for visitors to use at the site. For the first two years, when the first fruit shows up, small fruit will need to be picked off so that the tree can focus it's energy on growing taller and stronger. That way in the future, the trees will be able to sustain lots of fruit for community members.



The University of Nevada Cooperative Extension Indian Agriculture Program is available to provide outreach to Tribal farmers/ranchers to inform them about risk management, USDA programs available, Agriculture tax issues. The Tribe has provided office space to this program so it will be accessible to members on the reservation.

The Indian Territory, in partnership with Nevada Indian Commission and the Nevada Commission on tourism, is hosting the third annual "Nevada Tribal Tourism Conference" at the Las Vegas Paiute Golf Course on April 20-21, 2011. The conference features speakers who will provide a wide range of strategies on how to realize the vision of becoming a Tribal tourism destination spot.

Della John, Tribal Administrator

TAX DEPARTMENT

Tax Department staff has been busy preparing 2010 Income Tax returns for Tribal and community members as part of VITA (Volunteer Income Tax Assistance). All staff members were certified through the IRS to prepare income tax returns. VITA guidelines state that we are not allowed to prepare prior year taxes. So if you have tax returns for any year before 2010, you will have to take your return to another preparer.

The last day to file your 2010 Income Tax Return is April 18, 2011. Please don't wait for the last day to file your return as the staff will probably be very busy.

Tax Commission

Congratulations to Anita Dunn and Maxine Burns for being appointed to the Pyramid Lake Tax Commission. Both were selected by the Pyramid Lake Tribal Council at a meeting held on January 21, 2011. They bring a wealth of information and knowledge with them.

Services Provided

The Tax Department provides many services such as:

- Notary Services (no charge)
- Pyramid Lake Spousal Exemption Cards
- Applications for a Seller's Permit (Not a Business License Permit)
- Pyramid Lake Tribal Member Tax Exemption on deliveries made to the Reservation (except vehicles)
- DMV-Vehicle Tax Exemption Form(s)
- Pyramid Lake Souvenir License Plates

2011 Pyramid Lake Seller Permit

Section: 208.007 of the Pyramid Lake Tax Code states "Application for Permit Required: (1) Every person desiring to engage in or conduct business as a seller within the Reservation must file with the Tax Commission an application for a permit for each place of business."

If you have not renewed your 2011 Seller Permit, your file will be closed and your business will no longer be considered valid to sell on the reservation. Please, either renew your permit or let us know you no longer need the permit. The cost of a Seller Permit is \$25.

Notary Services

When requesting notary services, please remember to bring in photo identification. A notary verifies the identity of a document signer in an attempt to defer fraud.

For a DMV Tax Exemption form you will need to provide:

- Name of person(s) vehicle is registered to
- Year, make and model of vehicle
- License Plate Number
- Vehicle Identification Number (VIN)
- Physical and Mailing Address
- Tribal Enrollment Card

The DMV mails vehicle registration notices on postcards that DO NOT include the complete Vehicle Identification Number (VIN) which is required for a tax exemption form. When requesting a tax exemption form, please have the VIN available by bringing in your vehicle registration. The Tax Department may have the VIN on file if you requested an exemption form for the same vehicle in prior years.

When the Tax Staff is out of the office the Receptionist or Tribal Secretary can provide the DMV tax exemption form for you.

Tribal Member Spouse Cards

The Tribal Member Spouse card allows your spouse to be exempt from taxes at all Tribal entities, the usage of dumpsites and is recognized by all Tribal Law Enforcement at recreational areas.

If you have any updates to your spouse card or are no longer married, we ask that you please notify the office.

LITTLE WARRIORS LEARNING CENTER NEWS

Nixon- 574-1031 * Wadsworth 575-2774

We are currently excepting applications for enrollment for children ages 6 weeks up to 12 years old. Please call or stop by for rates, hours, and information about the programs we have to offer we have an open door policy and look forward to meeting with you.

Recyclable Art Poster Contest

Use an 8X10 poster board create a picture using items you have recycled (Parent help is to be limited). A prize will be awarded to the most creative poster in each of the following categories:

- Pre-school/Head Start - Kindergarten
- 1st grade – 3rd grade
- 4th grade – 6th grade
- Jr. High
- High School

Winners will be announced during the environmental fair **ALL** posters need to be received by Tuesday April 19th and can be turned in at either child care center or to your school office. Our staff will be by to collect the posters by noon on 4/19/11. If you have

any questions please call the Nixon Center at 574-1031 or the Wadsworth center at 575-2774. Have fun and be creative!!

Upcoming Fund Raiser

LWLC will be holding a yard sale/food sale on Saturday May 14th starting @ 8:00 at the Wadsworth center. Funds raised will go towards summer activities and staff wish list items. Donations for the yard sale will be accepted and greatly appreciated. Items can be dropped off starting Mon. May 9th at either center during working hours. Arrangements for donation pick-up can be made by calling either center.



Look for our flyers to be posted around the community real soon.

LWLC would like to thank the Pyramid Lake Jr. /Sr. High School Leadership Class for all their hard work and dedication. On their first visit to the Nixon site they cleaned our

CHILDREN'S CABINET

Did you know that there is a satellite office of The Children's Cabinet on the Pyramid Lake reservation? Do you know what The Children's Cabinet is and what we have to offer?

The Children's Cabinet is a non-profit agency whose home office is located at 1090 S. Rock Blvd. In Reno, Nevada. The Children's Cabinet was founded on the belief that creating partnerships with public and private agencies to collectively address the needs of children and families in Nevada results in positive and effective outcomes. This unique commitment to public-private partnership provides a foundation for The Children's Cabinet's organizational strengths by being able to respond quickly to the changing needs of the communities we serve and streamlining the collaboration in the delivery of services. Today, the Cabinet serves more than 15,000 children and families each year, including families from the Native American communities in our service area. Currently, The Children's Cabinet subsidy program services are available in Northern Nevada however; our quality program has recently expanded into the Southern Nevada area with a new office in Las Vegas. Our child care resource and referral department is funded through a contract with the State of Nevada welfare division.

At the Pyramid Lake office we are able to provide child care subsidy assistance, referrals to other agencies and services within the Cabinet such as access to child care provider technical assistance and training and parent education services such as "Catching Dreams" literacy program. Recently, the Pyramid Lake Tribal Child Care received funding from The Children's Cabinet for playground improvements at the Nixon site. The improvements were implemented by parent volunteers, community members and the child care staff.

The Children's Cabinet also offers a variety of family and youth programs at no cost for older children dealing with a range of issues. Programs include Gang Reduction Alternatives, drug and alcohol prevention, family counseling, independent living program for teens aging out of foster care and many more. Parents and youth interested in learning more about these programs or those who wish to access services may call our Reno office at (775) 352-8090.

For more information regarding The Children's Cabinet Subsidy and Quality services in the Pyramid office please contact Sherry Mendes at (775) 574-0305 or at our main office at (775) 856-6200.

parking lot, playground, and surrounding area which were much needed. They are now sharing their time on a weekly basis reading to the children (even using puppets) which all the children are enjoying. We applaud the leadership class for taking an interest in our program in such a positive way. Thank-you again from all the staff and children we think you're awesome.

The LEADERSHIP CLASS Community Cleanup at Nixon Little Warriors Learning Center on March 9th, 2011.

The Leadership Class under direction of Mr. Richard Barlese cleaned up the Nixon Little Warriors Learning Center playground area, parking area and across the roads. They cleaned up four garbage bags worth of trash around the daycare across by the community garden.

Richard Barlese, PLHS Leadership Class



PLHS READS TO DAYCARE

Every Friday the student leadership class goes to the Nixon Daycare to read to the kids.

Aisha Paya, who took on this roll to read to the kids as something to give back to the committee.

Readers are Aisha Paya, Conner Dunn, Carrington Burton, Jorge Enriquez, Rachel Dixon, Cliff Wilder, Richard Barlese, and Yesenia Espinosa.

We enjoy reading and interacting with all the kids.

By Aisha Paya

SUCCESS FOR TEACHERS, ADMINISTRATORS, STUDENTS, AND PARENTS AT PYRAMID LAKE JR./SR. HIGH SCHOOL

Roy J. Casey, Educational Consultant, spoke to the local board of trustees as to the successes at the Pyramid Lake School last Tuesday evening. He remarked about the students and the student academic intervention programs currently being established at the school. Those remarks varied from the school releasing students from intervention programs due to their achievement test scores (more students are on grade level in reading and mathematics) to their teachers are becoming highly qualified through the professional development offered at the school by way of seminars, workshops, and content mentors.

The after school program, coordinated by Carla Eben, has taken a new direction with a focus on academic tutoring with a homework club and a MAP (Measurement of Academic Progress) basic proficiency in reading, mathematics, writing, and science club. Students are referred to the after school program by teachers, counselors, and administrators. Ms. Eben extends the academic program to include an enrichment session for students from 5:00-5:45 Monday - Thursday of each week. The afternoon school program has both adult tutors and student tutors and is providing that just-in-time support for students. With the classroom interventions, school interventions, and after school interventions the students are realizing their academic, social, and behavioral success.

If you would like to visit our school please call Mr. Randy Melendez, principal, for an appointment to visit and participate in any of the student intervention opportunities.

PYRAMID LAKE JR/SR HIGH SCHOOL LEADERSHIP CLASS SELECTED FLORA GREENE AT ELDER RECOGNITION DAY

On March 15th, 2011. The Students has an assembly at the High School to honor local tribal elder. The Students stood in a circle in the school gym as, Carrington Burton read Flora's Story. Flora was not present as she had surgery and was recovering, but the assembly went on with a prayer/blessing for Flora's health by Ralph Burns. School Staff Tom Yellowcloud sang an Honor Song, and Cody Poafpbitty sang a round dance song. A pouch made by Rachel Dixon and beaded by Briana Quartz was later presented to Flora at her home by the Leadership Class.



FLORA'S BIO: Flora Greene also known as Grandma Flora was born on Feb 17 1917 to Joe & Bessie (Winnemucca) Greene. Flora was born in the bushes somewhere (So she says) in Nixon. She is the middle child of 5. Ella Esmania, Martin Greene, Scott Greene and Pike Greene. She has lived and worked on the Reservation the majority of her life, but she left as a young girl to attend Stewart Indian School in Carson City. While at Stewart she had lots of different jobs around the school. She worked in the kitchen and did laundry. Flora graduated from Stewart in 1936. She later found a job on the reservation at Abe and Sue's Trading Post as a clerk. In time, she gave birth to a baby boy who she named Gilbert (Gilly) Greene. Caring for a kid kept her and the rest of her family very busy. (Flora would become a woman of strength as years and war would take those she loved away) Grew Strong as time and war took her loved ones (and yet Flora and Ella would go together taking care of each other. Gilbert and Trenda would give Flora 3 grandchildren: Erica, Clinton, Miranda and 3 great grand children: Chyann Minoletti, Russell Miller, and DG.

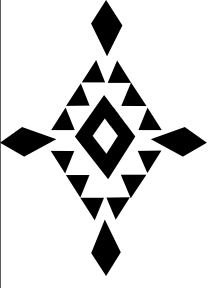
Flora was a foster grand parent for 10 years at the Nixon Headstart until retiring in 1990. One retired she raised children and would become well known throughout Nevada for her beautiful beadwork, quilts, pouches, baby moccasins and custom moccasins for pow wows dancers. Now some people call her "the doll maker" Flora once again shows her strength and spirit for living as she fell ill and was hospitalized on 3/4/2011. Grandma Flora is still standing strong hopefully for many years to come.



The PLHS Leadership went to visit Flora at home and delivered her pouch and a get well card to her home on Friday March 23. We surprised Flora. She smiled and told us about her health. She apologized for not being there, but the students told her we all just wanted her to get well.....

Carrington Butron, PLHS Leadership Class

LEADERSHIP CLASS HONORS TRIBAL ELDER SIMON HARRIS



Pyramid Lake High School has a class called Student Leadership. In this class they have different projects that they plan to accomplish. One of those projects included is called Senior Recognition which is having an Elder Recognized.

This project came into affect on Tuesday March 2, 2011. On this date the Leadership Class started with Mr. Simon Harris as an elder that should be recognized. The way the recognition went was there was a lunch served and an assembly held after during the advisory period at the high schools' gym. When both students and staff were in the gym they made a circle around Mr. Simon Harris and the people who accompanied him. Then there was an honor song sung for him.

Then a brief biography of him was read by Carrington Burton. After which he was presented by Jorge Enriquez with a hand-made pouch made by Rachel Dixon and beaded by Briana Quartz. Then to conclude the assembly there was a round dance.

By Jorge Enriquez
Leadership Class
Elder Recognition Coordinator



SOCIAL POWWOW & HAND DRUM CONTEST

Saturday

April 16, 2011

Nixon Tribal Gym

Grand Entry 3pm - ?

Host Drum: Still Kickin'

All Drums & Hand Drums invited!

**Cake walks, raffles, 50/50 to be played throughout pow-wow
Intertribal dancing, round dancing, exhibition dancing & great food!**

All proceeds to help fund the 3rd Annual Sacred Visions Pow-Wow..

Vendor Space: \$25 / Informational Free

For Vendor Info, contact Willam (775) 575-7063 or Janline (775) 772-0774
or sacredvisions09@clearwire.net

~ UNR Annual Spring Pow-wow ~ Honoring Higher Education ~

Contest
Powwow



POW-WOW

Located on the UNR Campus, the Virginia Street Gym is right off Virginia Street across the street from The Wolf Den.

April 23, 2011

Virginia Street Gym

Grand Entry Times:

12pm & 7pm

Headman: Hunter Osbourne, Pocatello ID

Headlady: Roxane Gomez, Montgomery Creek CA

MC: Tom Phillips, Manteca CA

AD: Jerry Bear, Skull Valley UT

Host Drum: BullChild, Tohatchi NM

Women's Fancy Shawl Special

Men's Fancy Special

Vendor and General Powwow Info:

Call: 775.784.4936

thecenter@unr.edu

www.unr.edu/thecenter/intertribal

Host Hotel:

Circus Circus 1.800.648.5010

500 North Sierra Street • Reno, Nevada 89503

Ask for the Powwow rate



3rd Annual Sacred Visions Competition Pow-Wow

"TE NANUMU MAGODYUKU"
"Bringing the People Home"

July 22 - 24, 2011

*Big Bend Ranch, Wadsworth, NV
Pyramid Lake Paiute Tribe*

Master of Ceremonies
Tom Phillips Sr.
Manteca, CA

Host Drum

Woodstock

Arena Director
Clint Cayou
Macy, Nebraska

St. George, Utah

CATEGORIES

Golden Age
Senior Men & Women
Adult Men & Women
Teen Boys & Girls
Junior Boys & Girls
Tiny Tots

Crowning of Royalty - Friday

Fun Run / Walk - Saturday

For More Information Contact:

All Events Open to Public
FREE Admission
FREE Camping

GRAND ENTRY

Friday 7pm
Saturday Noon & 7pm
Sunday Noon

Feast on Saturday
Native Arts & Crafts
Food Vendors

SPECIALS

Women's All-Around Special
Traditional Paiute Dress Special
Rabbit Dance Special
Jr. Boys Fancy Special
Tiny Tot Specials
Men's Switch Dance Special

Drum Contest & Hand Drum Contest

Hand Game Tournament

Horse Shoe Tournament

sacredvisions09@clearwire.net

or www.sacredvisionspowwow.com

William Wadsworth - Chairman (775) 575-7063 / adunn@clearwire.net

Royalty Contact:

Paula Paul (775) 384-4514
SV_royalty@hotmail.com

Vendor Contact:

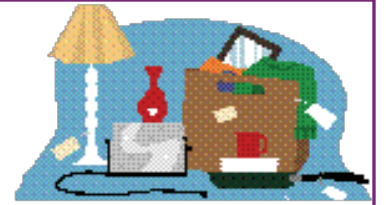
Angie Dunn (775) 412-8624
angiefaye@yahoo.com

Host Hotel
Comfort Suites
800 Mesa Drive, Fernley
(775) 980-6514

Sacred Visions Pow-Wow Committee P.O. Box 897, Wadsworth, NV 89442

Committee not responsible for short funded travelers, stolen property, or divorce.
No weapons or firearms permitted. Drug & Alcohol Free Event.

IT'S TIME FOR SPRING CLEANING...



RUMMAGE SALE

SATURDAY
April 30th
7 am - 3pm

WADSWORTH

Ida 'n Willie's Roadhouse

Space: \$10 each
(Limited Tables available)

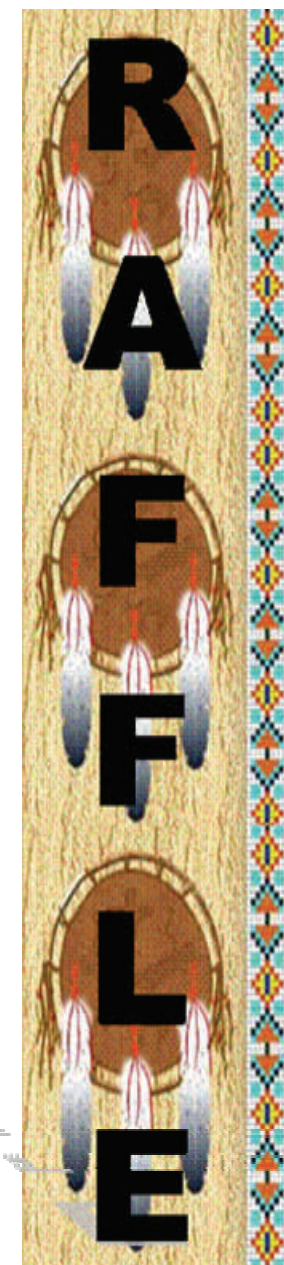
OTHER HAPPENINGS

Breakfast Burritos 7 am
Bingo 11 am
BBQ 11 pm



Hosted by:

Pyramid Lake Veterans & Warriors Organization
and Ida 'n Willie's Roadhouse



\$3 A TICKET OR 2 FOR \$5

Grand Prize:

PENDELTON BLANKET

Beaded items & many other prizes

Drawing to be held during the
Rummage Sale, Bingo and Food Sale at
Ida 'n Willie's Roadhouse, Wadsworth, NV
Saturday, April 30th, 7 am-3 pm.

Tables Available for \$10 each
(Limited Space Available)
Contact: Lela Leyva @ 335-6137



See a PLVWO
Color Guard Member
for tickets

Below is the Events the Pyramid Lake Veterans and Warriors Organization—Color Guard will be participating:

- April 9th Wadsworth Cemetery Cleanup
9:00 am
Lunch: Ida 'n Willie's Roadhouse
- April 16th Sacred Visions Social Pow-Wow
3:00 pm—Nixon Gym
- April 23rd UNR Pow-Wow
12:00 pm & 7:00 pm
Old Virginia St. Gym
Reno, NV
- April 30th Rummage & Craft Sale,
Bingo & Food Sale
7:00 am—Ida 'n Willie's Roadhouse
- May 7th Nixon Cemetery Cleanup
9:00 am—Nixon, NV
- May 14th Nixon Cemetery Cleanup
9:00 am—Nixon, NV
- May 20th Pyramid Lake Sunrise Ceremony
6:00 am
Numana Dam Hatchery Area
Off SR 447
- May 30th Memorial Day Celebration
10:00 am—Wadsworth Cemetery
11:30 am—Nixon Cemetery
12:00 pm—Potluck
Nixon Gym, Nixon, NV

Visit FACEBOOK for the latest updates.

Letters to the Editor

The Pyramid Lake Paiute Tribal Newspaper welcomes your "Letters to the Editor."

- ◆ Letters must be 200 words or less. Letters are subject to editing for conformance to the 200 word limit, as well as for libel and taste.
- ◆ Letters must carry a full, legible and signed name of its author. The newspaper staff does not withhold names of letter authors. Pseudonyms are not allowed.
- ◆ Each author is allowed one published letter per newspaper issue.
- ◆ To be published, all letters must have a permanent address and/or a daytime telephone number for verification. **This information will not be published.**
- ◆ Letters addressed to specific parties other than the Pyramid Lake Paiute Tribal newspaper, to readers, letters from other publications, form letters that do not contain original writing content by the signatory or personal complaints outside the public domain are not published.
- ◆ Letters are published in the order which they are received. Promptness of publication depends on the volume of letters received and space availability.

MAIL LETTERS TO:

Letter to the Editor
 PYRAMID LAKE PAIUTE TRIBE
 P O Box 256
 Nixon, NV 89424

Newspaper Submittal for Paper **2nd Quarter (April-June) DEADLINE: June 27th—Monday @ 12:00 p.m.**

Please complete **this form** and submit with your article.

BE SURE TO:

- Include your name, phone # and address.
- Personals may submit a hard copy of article. Hand written Personals ONLY must be printed legibly.
- **Submitted articles must be saved on CD** in Adobe Acrobat, Publisher, Word or WordPerfect format. (Media will be returned).
- **Articles can be submitted via e-mail to newspaper@plpt.nsn.us.** A hard copy of article must also be submitted by deadline.
- Pictures should be submitted in black & white. (Dark backgrounds do not scan well).
- Digital pictures must be taken with a high resolution for a good quality picture.
- REMEMBER: Pictures represent the quality of the picture submitted.
- Submit all information to the Tribal Manager's Office by deadline

DATE: _____ NEWSPAPER MONTH: _____
 NAME: _____
 PHONE: _____ DEPARTMENT: _____
 TITLE OF ARTICLE: _____
 ITEMS TO BE RETURNED: YES or NO
 IF YES, ADDRESS: _____

ADVERTISING RATES

Advertising space will be provided to any business, organization or individual at the following rates:

\$100/full page \$75/half page \$50/quarter page \$25/eighth page \$10/business card

All advertisements must be camera ready and cannot be returned. Each advertisement must be paid in full by the deadline date for publishing.

DEADLINES FOR THE YEAR 2011 (Tentative Dates, subject to change): Monday @ 12:00 pm

July-Sept (3rd qtr) **Due: Sept 26th** Oct-Dec **Due: Dec 30th**

This schedule will allow us to get the newspaper prepared, edited, and printed and ready for bulk mailing the first week of each month. The Tribal Manager's office collects your articles and will forward them to the Editor.

Thank you for contributing your articles for our Newspaper this past year. Please continue to contribute to our Newspaper and let the people know about your program or department's activities and accomplishments. Please submit on diskette in Microsoft Word, WordPerfect or Publisher format along with a hard copy of article.

CONTACT: PYRAMID LAKE PAIUTE TRIBE—NEWSPAPER ADVERTISEMENT
 P O Box 256, Nixon, NV 89424-0256 PH: (775) 574-1000; FX: (775) 574-1008

CHANGE OF ADDRESS

Name: _____
 Old Mailing: _____
 New Mailing: _____
 I confirm that this is my current address:
 Print Name: _____ Signature: _____ Date: _____



Numuwaetu Nawahana
 Pyramid Lake Paiute Tribal Newspaper
 P.O. Box 256—208 Capitol Hill Drive
 Nixon, NV 89424-0256
 www.plpt.nsn.us

PRSR STD
 U.S. POSTAGE
PAID
 NIXON, NV
 PERMIT #2